

Since 2006, Beaver Creek Church has been intentionally planning to:

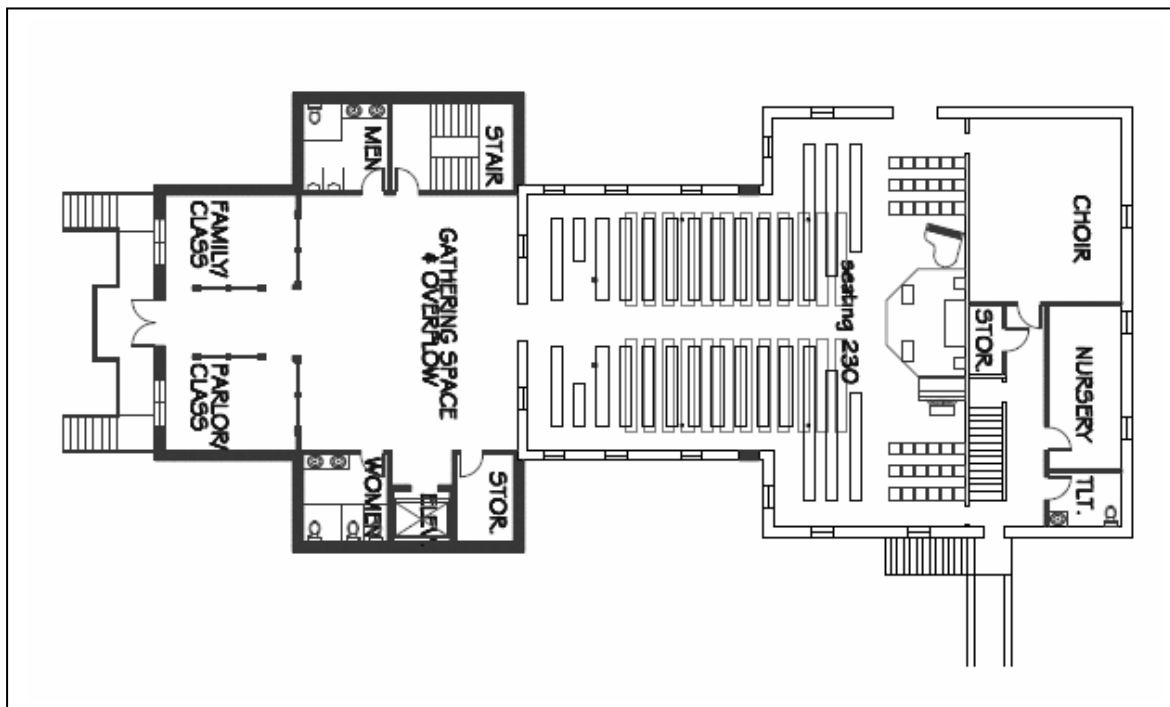
- ◆ *Build up* the church and all those it serves, and
- ◆ *Build out* the church building to accommodate recent and future growth

We can begin building when we raise the money for an appropriate down payment. The building project involves renovations and a major northward expansion. As sketched above, the proposed expansion preserves the historic character of the church's exterior.

Note: This brochure summarizes building possibilities. The drawings are not final building plans. Actual construction drawings would be assembled by a Building Committee appointed by the Church Board. However, the sketches in this brochure show how we could meet our goals as a congregation by "building up, building out."

Goal 1: Greater worship space

Planning for the future was a congregation-wide effort. It began with study and adoption of a mission statement. It included a congregational planning summit, focus groups and continuing prayer. The first of three goals adopted was greater worship space.

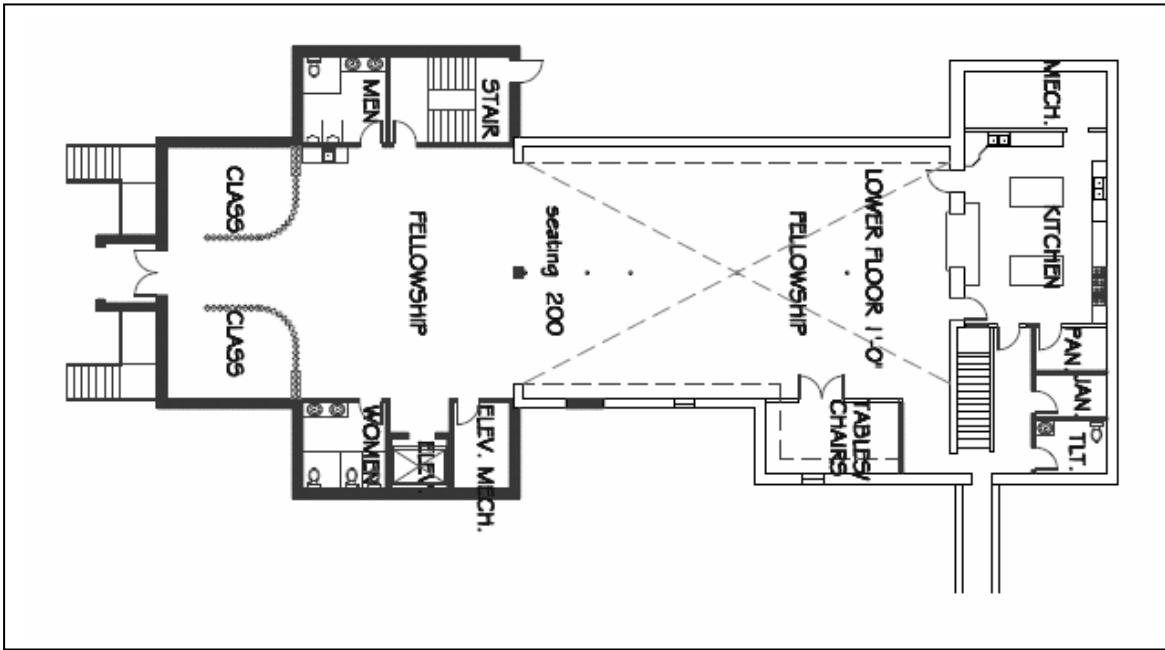


On the sanctuary level, the plan allows for additional sanctuary space, a gathering and overflow area, and multi-purpose rooms.

What we accomplish: a worship space that is more welcoming to new families and visitors. Prime seating expands to 230. Experts in church growth point out that visitors do not feel welcome in a sanctuary that feels “too full” when they enter. We want to show that there is room for new people, physically and spiritually.

Goal 2: Greater fellowship space

The congregation’s second goal was greater fellowship space. Our current fellowship hall is too small for recent and future growth. It is very difficult to hear.



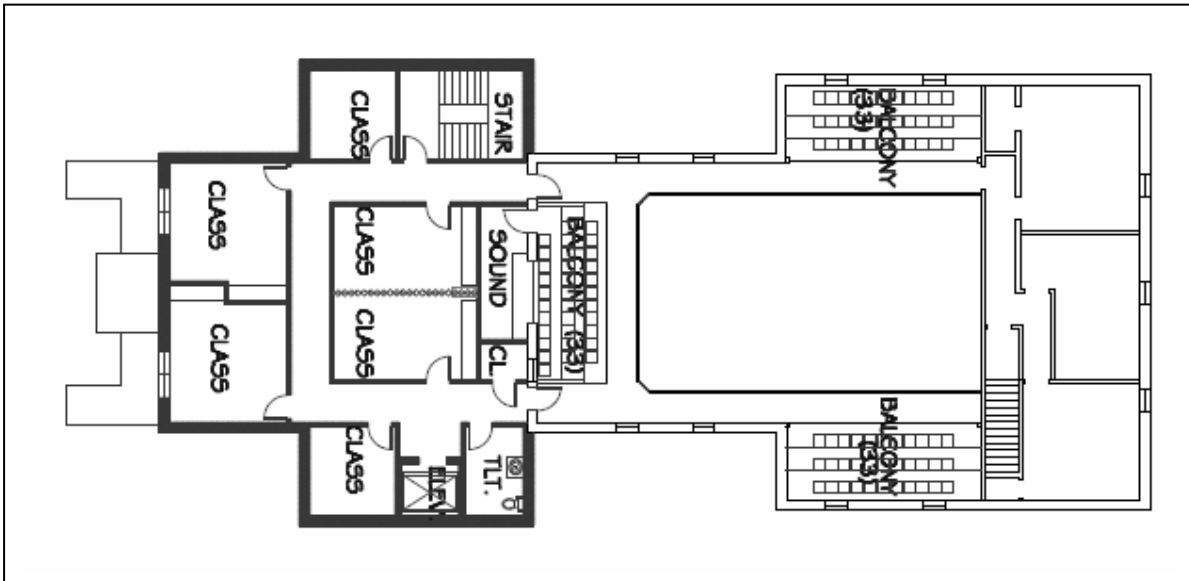
On the fellowship hall level, the plan calls for lowering the floor of the current space, then integrating new space for a total seating capacity of 200. Classrooms with movable partitions make it possible to host even larger gatherings.

What we accomplish: a fellowship space that allows us to welcome larger groups for events after church and throughout the week. We are then able to better support programs ranging from Vacation Bible School and summer youth programs to congregational dinners.

Goal 3: Greater Sunday School space

The congregation’s third goal was greater Sunday School space. Our master plan recognizes that the Sunday School program provides key elements: Bible study, fellowship, and connection with a small group for spiritual support. Currently Sunday School classes are crowded into unsuitable spaces, meeting in the existing building and at the parsonage across the road.

Sunday school space is added throughout the building, but especially on the upper level. One room with a movable partition allows for an especially large class when we have many people of a particular age. The upper level addition also allows up to 99 additional balcony seats for worship.



What we accomplish: More space, and more appropriate space, for a vibrant and growing Sunday School program.

Putting it all together

In the process of building and renovating, we will also improve the comfort of the entire building and make every level handicapped-accessible. In the days when our church was built, few were able to attend church after they had a loss of mobility. Today people can be active in Sunday School and church for years while facing mobility challenges, and we can fully include them with an accessible church.

The plan also maintains the historic architecture and character of the church, inside and out.

The purpose of this capital campaign is to raise an appropriate down payment. We call on the members and friends of Beaver Creek Church to join us in supporting this campaign with prayers, hard work, and financial contributions.

We are asking for prayerful commitments over a three-year period. You may pledge gifts of cash, financial assets, or any other asset of value. In keeping with Beaver Creek tradition, your commitment is not made known to the pastor or church board; instead, we will add up the total pledges and present them as part of our proposed financing of the project. Enclosed is a form that you may use to make your pledge. Pledges will be collected at a special Dedication Sunday on December 20; but we will continue to accept pledges until January 17 before announcing the total.

If you have questions, please contact a member of the Capital Campaign leadership team:

Jim Grove
 Jim.Grove@bankwithunited.com
 540-350-2557

Don Hulvey
 hulvda@aol.com
 540-828-6870

Mitch Moore
 mooresm5@comcast.net
 540-879-3733

Bill Wood
 woodwc@gmail.com
 540-828-4015



Gift Table

Gift Level	No. of Gifts Required	Total per year	Three-Year Total
\$45,000 and above	1	\$15,000	\$45,000
\$40,000 to \$44,999	2	\$10,000	\$60,000
\$10,000 to \$29,999	7	\$3,333	\$70,000
Total-Level One	10		\$175,000
\$5,000 to \$9,999	20	\$1,667	\$100,000
\$1,000 to \$4,999	30	\$1,000	\$30,000
\$500 to \$999	50	\$167	\$25,000
Total-Level Two	100		\$155,000
Below \$500	Many		\$70,000
			\$400,000